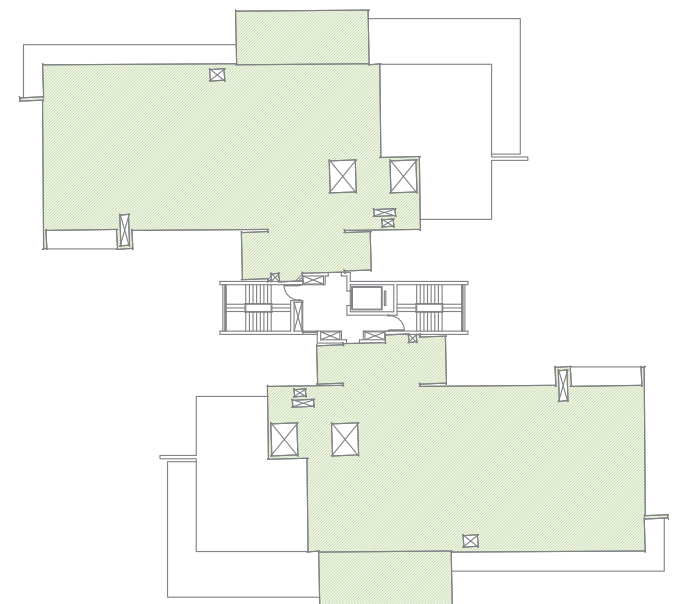
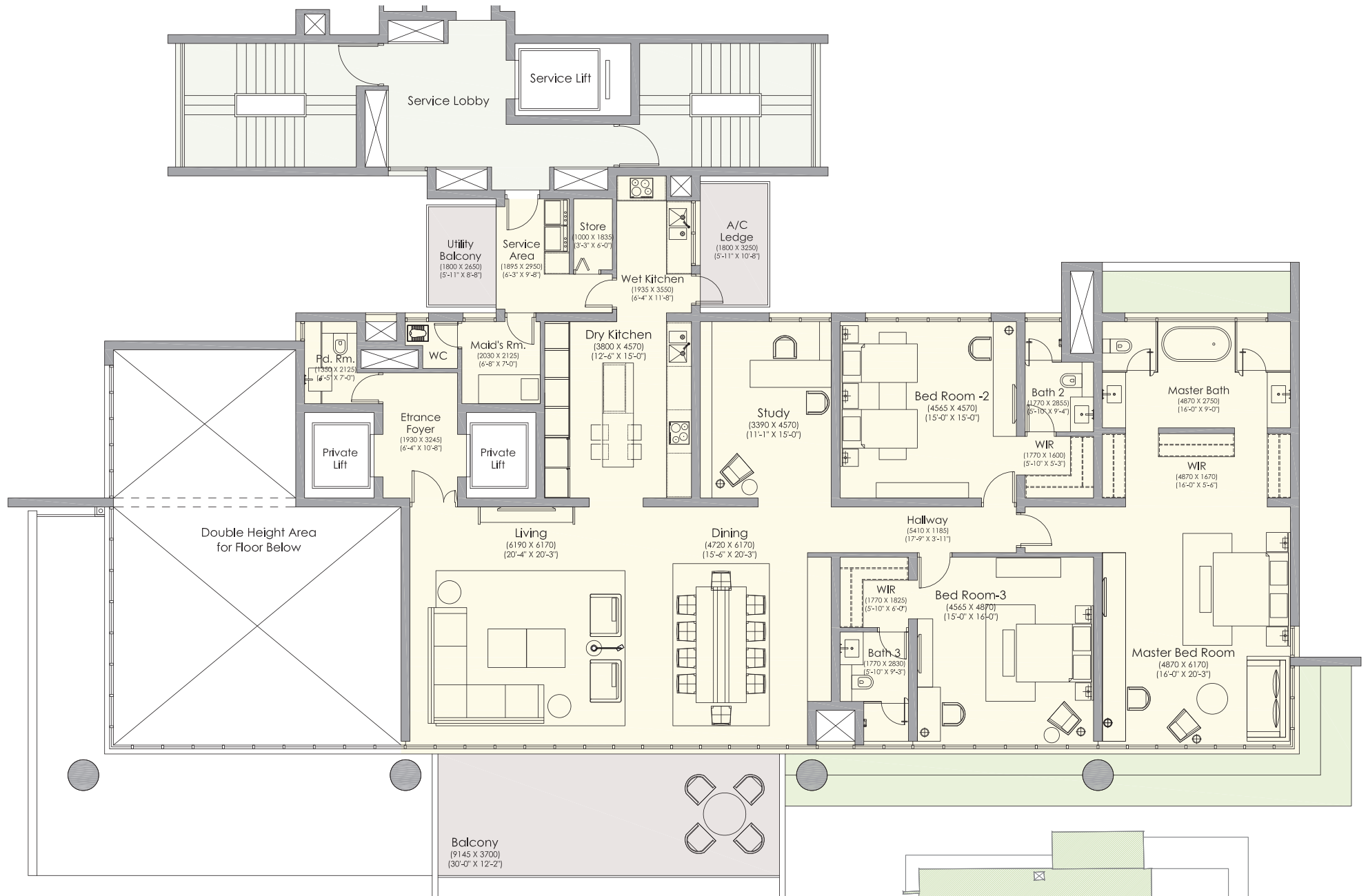


Ireo Gurgaon Hills Floor Plan, 3BHK 4784Sq.Ft.

THREE BED ROOM UNIT - INDICATIVE LAYOUT

UNIT AREA- 4784.04 SQ FT



TOWER A (BLOCK I & II):	2 nd , 4 th , 6 th , 8 th , 10 th , 12 th , 14 th , 16 th , 18 th .
TOWER B, C, D (BLOCK I & II):	2 nd , 4 th , 6 th , 8 th , 10 th , 12 th , 14 th , 16 th , 18 th , 20 th , 22 nd , 24 th .

THREE BEDROOM UNIT FLOOR LOCATIONS AT DIFFERENT TOWERS

This plan depicts one amongst other possible internal layouts for the Unit. Actual Unit shall only contain fixed structural walls and columns in a bare shell condition without internal partition walls. Unit area and floor plan are subject to change during the course of construction.